

# Stanford

Facts 2022





# Stanford Facts 2022

*Stanford University Today*

## Table of Contents

Stanford Facts 2022	1
Welcome to Stanford	2
About Stanford	5
Undergraduate Education	10
Graduate Education	18
Postdoctoral Scholars	22
Schools and Programs	24
Stanford Faculty	30
Staff	33
Research and Innovation	34
The Arts	40
Libraries and Resources	44
Student Life	46
Cardinal Athletics	50
Stanford Campus	52
Stanford Medicine	56
Finances	58
University Administration	60
Stanford Alumni	63

⤴ **This Page:** The Stanford Main Quad.

⤴ **Front Cover:** The steps of the Lane History Corner in spring.



# Welcome to Stanford

⌘ Welcome to Stanford banner across the entrance portals of Palm Drive.

**Located in the San Francisco Bay Area,** Stanford University is a place of discovery, creativity and innovation. Founded in 1885, Stanford's areas of excellence span seven schools along with research institutes, the arts and athletics. Stanford's students, faculty and staff work to improve the health and well-being of people around the world through the discovery and application of knowledge.

## Visitor Information Services

A division of Stanford University's Office of Undergraduate Admission, Visitor Information Services at 295 Galvez Street provides information and campus tours, except during some academic breaks and holidays.\* Prospective undergraduate students and their supporters can tour and experience Stanford through Discover Stanford information sessions as well as a variety of specialized tours and programs, both online as well as in person (when available). The Stanford Visitor Center promotes exposure and access to higher education for other college-bound groups as well through seasonal tours and offerings. For tour and program information, call 650-723-2560. [admission.stanford.edu/engage](https://admission.stanford.edu/engage)

*\*Check website to confirm availability.*

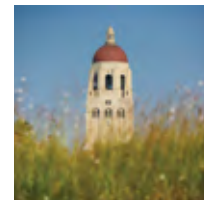
## Stanford Memorial Church

Stanford's Memorial Church was established by Jane Stanford in memory of her husband, Leland Stanford, as a symbol of the family's commitment to an education informed by diverse religious, spiritual, moral and ethical values. Dedicated in 1903 as a non-sectarian religious center, "Mem Chu" remains the most prominent architectural feature of the Main Quadrangle and is home to University Public Worship. The church features five organs, including the Fisk-Nanney organ, which has 73 ranks and 4,332 pipes. It is one of three religious and spiritual spaces on campus led by the Office for Religious and Spiritual Life. Call 650-723-3469 for docent-led tours. [orsl.stanford.edu/who-we-are/memorial-church-companion-spaces](https://orsl.stanford.edu/who-we-are/memorial-church-companion-spaces)



## Hoover Tower and Pavilion

The 285-foot Hoover Tower was built in 1941 and dedicated as part of Stanford's 50th anniversary celebration. The Lou Henry Hoover Observation Deck offers views of the Santa Clara Valley and houses a carillon of 48 bells, the largest inscribed "For Peace Alone Do I Ring." The lobby features exhibitions on such topics as the institution's founder—Stanford alumnus and US president Herbert Hoover—and collections held at the Hoover Institution Library & Archives.



## The Dish

The 150-foot-diameter radiotelescope in the Stanford foothills called the Dish was constructed in the 1960s to probe the scattering properties of the Earth's ionosphere. It is still in use and is owned and operated by SRI International. Annually, more than 600,000 people hike the service roads surrounding the Dish within Stanford's 315-acre habitat reserve, which also supports academic programs, environmental restoration and habitat conservation. Access is limited to daylight hours, and pets are prohibited. [dish.stanford.edu](http://dish.stanford.edu)



A procession of flags begins the Convocation.



Aerial view of the Stanford Oval.

## About Stanford

**The Leland Stanford Junior University was founded in 1885** by Jane and Leland Stanford in memory of their only child, Leland Jr., who died of typhoid fever at 15. After his 1884 death, the Stanfords determined that they would do something for other people's children.

They decided to create a university that was, from the outset, untraditional: coeducational in a time when most private universities were all-male; nondenominational when most were associated with a religious organization; and practical, producing cultured and useful citizens. The Founding Grant states the university's objective is "to qualify its students for personal success, and direct usefulness in life" and its purpose "to promote the public welfare by exercising an influence in behalf of humanity and civilization."

Leland Stanford, who served as California's governor and senator, devoted to the university the fortune he had earned, first by supplying provisions to the '49ers mining for California gold and later as one of the "Big Four," whose Central Pacific Railroad laid tracks eastward to meet the Union Pacific



⌕ Aerial view of Hoover Tower and the red tile roofs of campus, with the foothills of the East Bay in the background.

and complete the transcontinental railway. Included in the Founding Grant was the Stanfords’ Palo Alto Stock Farm for the breeding and training of trotting horses, 35 miles south of the family’s San Francisco residence.

The Stanfords stipulated that the land they conveyed to the university could not be sold, and the campus still carries the nickname “the Farm.” The campus sits on the ancestral land of the Muwekma Ohlone Tribe. This land was and continues to be of great importance to the Ohlone people. Today, the university and the Muwekma Ohlone Tribe are partners in community-led archaeology, historic interpretation and a native plant garden.

The Stanfords engaged landscape architect Frederick Law Olmsted to design the campus. Their collaboration with Olmsted and the architectural firm of Shepley, Rutan, and Coolidge resulted in Stanford’s characteristic buildings of local sandstone with red-tiled roofs, surrounding a cloistered quadrangle with Memorial Church as its focus.

The rectangular plan of the Main Quadrangle was designed to provide for expansion through a series of quadrangles developed laterally. Stanford opened its doors on Oct. 1, 1891, with some 555 students enrolled in the first year.

[stanford.edu/about](https://stanford.edu/about)

Presidents of Stanford University

1891–1913	David Starr Jordan	1970–1980	Richard W. Lyman
1913–1915	John Casper Branner	1980–1992	Donald Kennedy
1916–1943	Ray Lyman Wilbur <sup>1</sup>	1992–2000	Gerhard Casper
1943–1948	Donald B. Tresidder <sup>2</sup>	2000–2016	John Hennessy
1949–1968	J. E. Wallace Sterling <sup>3</sup>	2016–	Marc Tessier-Lavigne
1968–1970	Kenneth S. Pitzer		

<sup>1</sup> Robert Eccles Swain served as acting president 1929–1933.

<sup>2</sup> Alvin Eurich served as acting president between Tresidder and Sterling.

<sup>3</sup> Robert J. Glaser served as acting president between Sterling and Pitzer.

Historic Milestones

1824 Mar. 9	Leland Stanford born	1891 Mar. 22	David Starr Jordan becomes university’s first president
1828 Aug. 25	Jane Lathrop Stanford born	Oct. 1	Opening Day of the university; 555 students registered
1861 Sept. 4	Leland Stanford elected governor of California	1892 Mar. 19	Stanford wins first Big Game with Cal
1868 May 14	Leland Stanford Jr. born	June 27	Hopkins Marine Station established on Monterey Bay
1869 May 10	Leland Stanford drives Gold Spike at Promontory, Utah, for the first transcontinental railroad	1893 June 21	Leland Stanford dies
1872 May	Eadweard Muybridge performs first horse-in-motion experiments	1894 May 30	First PhD awarded
1884 Mar. 13	Leland Stanford Jr. dies in Italy at 15	1895 May 29	Pioneer Class graduates, including Herbert Hoover
1885 Jan. 28	Leland Stanford elected U.S. senator from California	1896 Apr. 4	First women’s intercollegiate basketball game
Nov. 11	Founding Grant of the university executed	1903 Jan. 25	Memorial Church dedicated
1887 May 14	Cornerstone of the university laid	1905 Feb. 28	Jane Lathrop Stanford dies
		1906 Apr. 18	Great San Francisco Earthquake causes extensive damage

<b>1908</b>	Oct. 30	Cooper Medical College acquired
	Dec. 18	School of Law organized
<b>1913</b>	May 23	School of Medicine organized
	Aug. 1	John Casper Branner becomes second president
<b>1916</b>	Jan. 1	Ray Lyman Wilbur becomes third president
<b>1917</b>	Apr. 27	School of Education organized
<b>1919</b>	June 20	Hoover War Collection (now Hoover Institution on War, Revolution and Peace) established
	July 14	Main Library opens
<b>1920</b>	Jan.	First undergraduate tuition charged
<b>1921</b>	May 23	Honor Code adopted
<b>1925</b>	May 15	School of Engineering organized
	Sept. 30	Graduate School of Business opens
<b>1941</b>	June	University's 50th anniversary celebrated; Hoover Tower dedicated
<b>1943</b>	Sept. 1	Donald B. Tresidder becomes fourth president
<b>1946</b>		Creative Writing Program founded by Wallace Stegner
<b>1947</b>		School of Mineral Sciences (now Earth, Energy & Environmental Sciences) organized
<b>1948</b>	Sept. 1	Schools of Biological Sciences, Humanities, Physical Sciences and Social Sciences merged into School of Humanities and Sciences

<b>1949</b>	Apr. 1	Wallace Sterling becomes fifth president
<b>1951</b>	Oct. 1	First Stanford Research Park lease signed with Varian Associates
<b>1952</b>	Apr. 1	Douglas Whitaker becomes first provost
	Nov. 6	Physics Professor Felix Bloch becomes Stanford's first Nobel laureate
<b>1958</b>	June 24	First overseas campus opened near Stuttgart, Germany
<b>1962</b>		The radio telescope called the Dish begins operations
<b>1967</b>	Sept. 9	Stanford Linear Accelerator Center (now SLAC National Accelerator Laboratory) dedicated
<b>1968</b>	Sept. 12	Inaugural session, Senate of the Academic Council
	Dec. 1	Kenneth Pitzer becomes sixth president
<b>1970</b>	Sept. 24	Richard Lyman becomes seventh president
<b>1974</b>	Feb. 11	B. Gerald Cantor donates his collection of Rodin sculptures
<b>1980</b>	Aug. 1	Donald Kennedy becomes eighth president
<b>1989</b>	Oct. 17	Loma Prieta earthquake causes extensive damage
<b>1992</b>	Sept. 1	Gerhard Casper becomes ninth president

<b>1998</b>	Sept.	Stanford Alumni Association integrated into the university
<b>1999</b>	Jan.	The Leland Stanford Jr. Museum reopens as part of the Iris & B. Gerald Cantor Center for Visual Arts
<b>2000</b>	May 2	The foothills surrounding the Dish become a habitat conservation area
	Oct. 20	John Hennessy becomes 10th president
<b>2005</b>	Dec. 31	The Campaign for Undergraduate Education raises more than \$1 billion
<b>2011</b>	April 15	Stanford earns its 100th NCAA national team athletic title

<b>2012</b>	Feb. 8	The Stanford Challenge fundraising campaign raises \$6.2 billion
<b>2014</b>	Sept. 21	The Anderson Collection at Stanford University opens
<b>2015</b>	Sept. 21	Stanford launches its 125th anniversary celebrations
<b>2016</b>	Feb. 23	The Knight-Hennessy Scholars program is announced
	Oct. 21	Marc Tessier-Lavigne becomes 11th president
<b>2020</b>		Worldwide pandemic moves classes, many activities online

## Growth of Academic Council\* and Student Body

\* Includes tenure-line faculty, non-tenure-line faculty and senior fellows at specified policy centers and institutes. Academic staff—teaching, center fellows and Medical Center-line faculty—are not members of the Academic Council.

\*\*Enrollment decreased due to pandemic-related gap year requests

	Undergraduate Students	Graduate Students	Academic Council
<b>1900</b>	1,055	114	75
<b>1910</b>	1,498	157	112
<b>1920</b>	2,165	283	150
<b>1930</b>	3,103	1,530	271
<b>1940</b>	3,460	1,782	309
<b>1950</b>	4,805	2,907	372
<b>1960</b>	5,648	4,208	619
<b>1970</b>	6,221	5,217	1,029
<b>1980</b>	6,630	6,236	1,230
<b>1990</b>	6,555	6,886	1,340
<b>2000</b>	6,548	7,700	1,368
<b>2010</b>	6,895	8,870	1,468
<b>2015</b>	6,994	9,196	1,651
<b>2016</b>	7,032	9,304	1,659
<b>2017</b>	7,056	9,368	1,667
<b>2018</b>	7,083	9,437	1,681
<b>2019</b>	6,994	9,390	1,701
<b>2020**</b>	6,366	8,791	1,711
<b>2021</b>	7,645	9,292	1,692



⌘ Students walking  
in Memorial Court.

# Undergraduate Education

**Students who enjoy learning for its own sake** thrive at Stanford. We seek students who have selected a rigorous academic program and achieved distinction in a range of areas.

With an approximate 5-to-1 student-to-faculty ratio, Stanford emphasizes close student and faculty interaction. Stanford offers three undergraduate degrees: Bachelor of Arts, Bachelor of Sciences and Bachelor of Arts and Sciences. Each is designed to achieve balance between depth of knowledge acquired through specialization and breadth of knowledge gained through exploration.

Three of Stanford's seven schools award undergraduate degrees: Humanities and Sciences; Earth, Energy & Environmental Sciences; and Engineering. Undergraduates complete at least 180 units, including major courses, writing and rhetoric requirements, and one year of a foreign language.

All undergraduates also complete their Ways of Thinking / Ways of Doing general education requirements: 11 courses in 8 interdisciplinary Ways categories.

Undergraduates also experience COLLEGE, a three-quarter required set of courses for first-year students incorporating Civic, Liberal, and Global education.

[college.stanford.edu](https://college.stanford.edu) | [undergrad.stanford.edu](https://undergrad.stanford.edu)

## **Stanford's distinctive undergraduate programs include:**

### **Introductory Seminars**

These small seminar classes for first- and second-year students enroll more than 2,000 students annually. Faculty from all seven schools of the university teach over 200 seminars each year. [exploreintrosems.stanford.edu](https://exploreintrosems.stanford.edu)

### **Bing Overseas Studies Program**

Stanford offers study away opportunities in Australia, Berlin, Cape Town, Florence, Hong Kong, Istanbul, Kyoto, Madrid, New York, Oxford, Paris and Santiago. Also offered are short-term faculty-led programs in Oaxaca and various locations. Each year, approximately 900 students—50 percent of the average class year—study away on Stanford programs.

[bosp.stanford.edu](https://bosp.stanford.edu)

### **Undergraduate Research**

Last year the office of the Vice Provost for Undergraduate Education dedicated \$5.5M to supporting nearly 1,000 students participating in a wide range of virtual and on-campus projects and programs. In the coming year, we look forward to resuming support for projects at field sites around the globe.

[undergradresearch.stanford.edu](https://undergradresearch.stanford.edu)

Project funding was used by students and faculty in departments and programs across every school, as well as nearly 20 interdisciplinary institutes and research centers. Projects spanned the humanities, arts, social sciences, natural sciences, engineering and medical sciences.



⌘ The scene in White Memorial Plaza on the first day of New Student Orientation.

### Undergraduate Fields of Study

Stanford offers 69 major fields of undergraduate study. Engineering students may also elect to pursue an individually designed major. [majors.stanford.edu](https://majors.stanford.edu)

1,511 Bachelor Degrees Awarded in 2021

### Top 6 Undergraduate Degrees Awarded

2020-2021

Computer Science  
Human Biology  
Economics  
Engineering  
Management Science and Engineering  
Symbolic Systems

### Top Majors by Enrollment

Fall 2021

Computer Science  
Economics  
Engineering  
Human Biology  
Management Science and Engineering

# The Class of 2025

## Total Matriculated

2,126  
Students

## Gender Balance

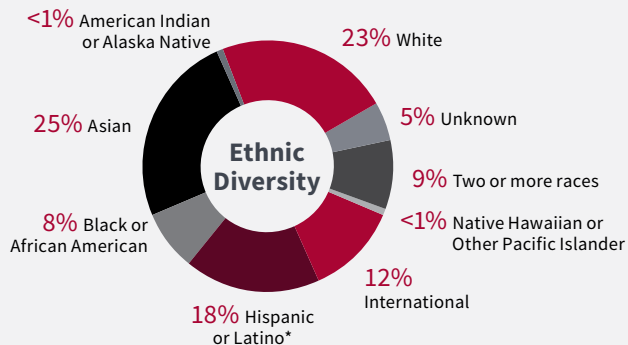
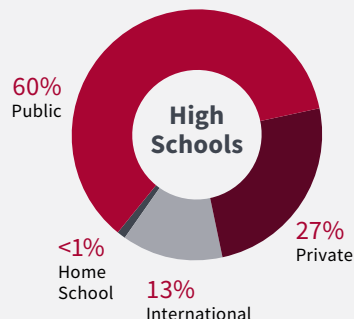
51% 49%  
Women Men

## Geographic Diversity

49 77  
US States Non-US Countries

## First-generation college students

18%



Numbers have been rounded to the nearest whole number.

\* Includes all reporting Hispanic/Latino, regardless of race.

UNDERGRADUATE EDUCATION | 13

# All Undergraduates Fall 2021

Total Matriculated

7,645 Students

90%

5-year Graduation Rate

## Stanford Student Awards

128

Rhodes  
Scholars

97

Marshall  
Scholars

71

Truman  
Scholars

22

Stanford Knight-  
Hennessy Scholars

Students attend the Stanford opening Convocation Ceremony outdoors at the Frost Amphitheater.

## Majors By School

57% Undeclared

24% Humanities  
& Sciences

18% Engineering

1% Earth, Energy &  
Environmental Sciences

Gender  
Balance

51%  
Women

49%  
Men

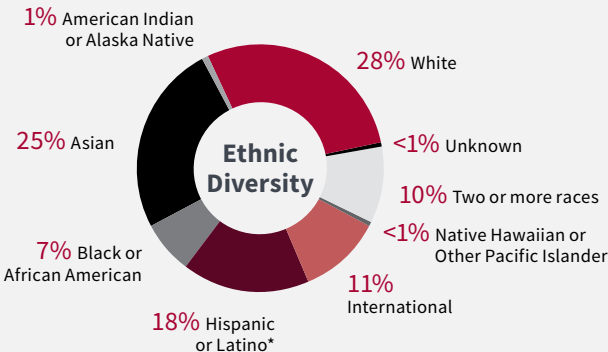
Geographic  
Diversity

36%  
California

51%  
Other U.S.

13%  
International

Ethnic  
Diversity



Numbers have been rounded to the nearest whole number.  
\* Includes all reporting Hispanic/Latino, regardless of race.

## Undergraduate Financial Aid

Stanford has a long-standing commitment to providing an affordable education to all students, regardless of their economic circumstances. Eighty-seven percent of the recent graduating class had no student debt. Through our generous need-based financial aid program, parents with annual incomes below \$150,000 and assets typical for that income level pay no tuition. Parents with income at or less than \$75,000 and typical assets pay no tuition or room and board. Families with higher incomes and assets also qualify for assistance depending on their individual circumstances.

[financialaid.stanford.edu/undergrad](https://financialaid.stanford.edu/undergrad)

### Financial Aid 2020/21

Total number of students receiving financial aid toward cost of attendance *	4,480
Total number of students enrolled (average of fall, winter and spring)	7,056
Percent of students receiving aid toward attendance	64%
Percent of students awarded need-based Stanford scholarships and grants	46%
Percent of students receiving Pell Grants	17%
Scholarship aid	\$213,280,385
Long-term loans	\$3,092,951
Term-time jobs	\$1,613,164
<b>Total</b>	<b>\$217,986,500</b>

### Sources of Scholarship Aid 2020/21

Stanford General Funds	\$21,403,455
Donor Gifts, not including athletic awards	\$22,088,046
Endowment Income, not including athletic awards	\$121,355,233
Trademark Licensing Income	\$2,985
Athletic Awards	\$26,531,867
Department Funds	\$2,829,215
Federal Pell Grants	\$5,831,495
Federal Supplemental Grants	\$1,468,938
Other Federal Grants	\$913,127
State Grants	\$1,803,018
Other External Awards	\$9,053,006
<b>Total</b>	<b>\$213,280,385</b>

Student on a Zoom call in the Science and Engineering Quad.



### Sources of Scholarship Aid 2020/21 summary

Federal	\$8,213,560
State	\$1,803,018
University	\$194,210,801
External	\$9,053,006
<b>Total</b>	<b>\$213,280,385</b>

### Student Budget 2021/22

Tuition	\$55,473
Mandatory Fees **	\$696
Room and Board	\$17,860
Books & Supplies (estimated)	\$1,305
Personal (estimated)	\$3,564
<b>Total Cost of Attendance</b>	<b>\$78,898</b>

Orientation and Document Fee (Fresh/Transfer Only)	\$775
Cardinal Care Health Insurance (12-month coverage)	\$6,192
Percentage of graduates with debt	13%

The median cumulative undergraduate indebtedness for students with debt receiving undergraduate degrees in 2020/21 (Average indebtedness was \$23,318) \$13,700

\*Stanford provides significant support to students other than the total cost of attendance such as Undergraduate Research Grants. That type of funding is not included in this analysis.

\*\*Includes Campus Health Services fee charged to all students living on campus.



New graduate students at orientation day.

## Graduate Education

**Graduate education has been central** to Stanford's reputation for academic excellence, intellectual innovation and entrepreneurial spirit since the university's founding. In Stanford's first year, 1891, 39 men and 12 women from 19 states enrolled as graduate students, representing one of the first opportunities for graduate study on the West Coast. Currently, they constitute 57 percent of Stanford's overall enrollment.

Today, 9,292 students are pursuing 14 distinct post-baccalaureate degrees in nearly 200 graduate programs in all seven of Stanford's schools: Business; Earth, Energy & Environmental Sciences; Education; Engineering; Humanities and Sciences; Law; and Medicine. Stanford offers several doctorates, the PhD, JD, MD, DMA, JSD, and a variety of master's degrees, including the MS, MA, MBA and MFA. About half of Stanford's graduate students are pursuing a doctoral degree; Stanford is consistently among the leading private US universities awarding the highest number of PhDs each year. Stanford's schools, departments and faculty have considerable autonomy in shaping their graduate program requirements, allocating resources and creating innovative learning opportunities. [gradadmissions.stanford.edu/degrees](https://gradadmissions.stanford.edu/degrees)

### Academic Life

Stanford's highly collaborative intellectual community provides an unparalleled environment for graduate study and research. Students who pursue graduate and professional degrees have opportunities to study with a wide array of faculty. Graduate students engage in learning, teaching and research that often extend beyond departmental and disciplinary boundaries, and they may study in interdisciplinary or joint degree programs that span schools.

Graduate students are encouraged to engage in a variety of professional and career development opportunities at Stanford as they prepare for a diversity of career paths. Many graduate students have the opportunity to undertake research or teaching assistantships, where they hone their skills as researchers and teachers while also contributing to the university's mission of education and research. The Office of the Vice Provost for Graduate Education works collaboratively across the university, leading initiatives and providing resources that enhance the quality of graduate students' educational experiences and position Stanford at the forefront of innovation in graduate education.

### Fellowships and Awards

About 85 percent of Stanford graduate students receive financial assistance from Stanford or external sources. The Office of the Vice Provost for Graduate Education administers nine university-wide graduate fellowship programs. The Stanford Graduate Fellowships in Science and Engineering program annually awards three-year fellowships to over 100 exemplary incoming doctoral students. Since 2008, over 325 doctoral students have received the three-year Stanford Interdisciplinary Graduate Fellowship Program for innovative research that crosses traditional disciplinary boundaries. The EDGE (Enhancing Diversity in Graduate Education) Doctoral Fellowship and the DARE (Diversifying Academia, Recruiting Excellence) Doctoral Fellowship programs provide funding and professional development and mentoring opportunities to exemplary doctoral students who enhance diversity within their academic fields and in the professoriate. [vpge.stanford.edu/fellowships-funding/all](https://vpge.stanford.edu/fellowships-funding/all)

# Graduate Students Fall 2021

## Total Matriculated

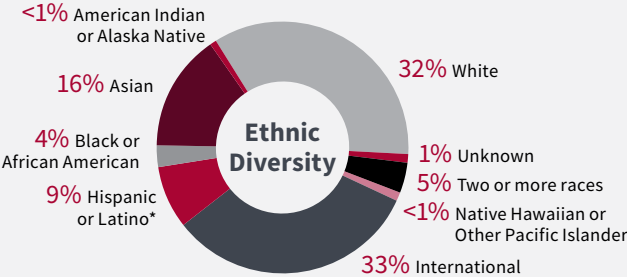
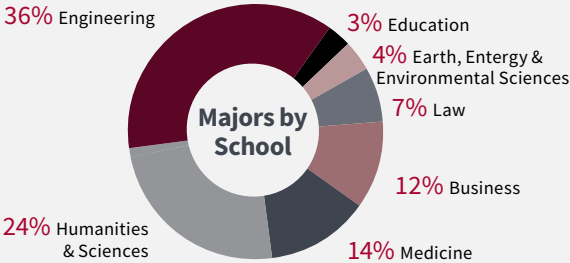
9,292 Students

## Gender Balance

45% Women  
55% Men

## Degrees Awarded 2020-21

379	1,822	288	817
Master's Professional (MBA)	Master's Academic	Doctoral Professional (JD, MD)	Doctoral Academic (PhD, DMA, JSD)



## Geographic Diversity

34% International  
36% California  
30% Other U.S.

Stanford graduate students have a long history of competing successfully for national and international fellowships as well as research grants. For example, over 700 graduate students are supported by a National Science Foundation Graduate Research Fellowship, a three-year fellowship awarded to the nation's most promising scholars.

The Knight-Hennessy Scholars program, the largest fully endowed scholars program in the world, supports a community of future global leaders to address complex challenges through collaboration and innovation. Every year, up to 100 high-achieving students from around the world receive full funding to pursue any graduate degree at Stanford. [knight-hennessy.stanford.edu](https://knight-hennessy.stanford.edu)

## Student Life

Students with a variety of diverse backgrounds and life experiences pursue graduate studies at the university. Approximately 34 percent of the 2021-22 graduate student population, over 3,144 students, are international students from over 117 countries. The top five countries other than the US that Stanford graduate students call home are China, India, Canada, South Korea and Brazil. Students from underrepresented backgrounds account for 15 percent while women constitute 45 percent of graduate enrollment in 2021-2022.

The majority of graduate students live in university-subsidized housing, and many others live in nearby neighborhoods. Living in close proximity to campus allows graduate students to engage fully in Stanford's vibrant intellectual community. Stanford has made a major investment in graduate housing, building a new complex with 2,400 spaces, which opened in 2020. The university now has the capacity to house 75 percent of graduate students in subsidized housing. [glo.stanford.edu](https://glo.stanford.edu)

Numbers have been rounded to the nearest whole number.

\* Includes all reporting Hispanic/Latino, regardless of race.



# Postdoctoral Scholars Fall 2021

Total Postdocs

2,406\*

\*Excludes Medical Fellows

Increase in #  
since 2010

30%

Gender Balance

44%  
Women

56%  
Men

⌘ Postdoctoral scholar  
works to analyze samples  
in the Dekas Lab.

## Postdoctoral Scholars

**Stanford's thriving academic community** includes approximately 2,400 postdoctoral scholars distributed over six schools. Postdocs contribute to the university's research, education and clinical missions through research, mentoring, teaching, filing patents, creating software and other activities. About 60 percent of postdocs are international, bringing perspectives from varied cultures and backgrounds to Stanford.

### Professional Development

Stanford's Office of Postdoctoral Affairs provides professional development and administrative support to postdoctoral scholars and the more than 800 faculty with whom they train. Key programs are directed at early training plans, teaching and grant writing. The Design Your Postdoc curriculum is adapted from the d.school's Designing Your Life work and helps new postdocs maximize their training at Stanford. A Postdoc Teaching Certificate requires roughly 100 hours of training in both required and elective classes and workshops that provide a framework for thinking about, preparing for and practicing teaching. The Biosciences Grant Writing Academy

is a key collaborator that supports postdocs in writing fellowship and career development proposals.

Other professional development collaborators include Biosci Careers, BEAM Stanford Career Education and the office of the Vice Provost for Graduate Education, which are geared to support growing independence and career transition. The NSF-funded Research University Alliance of nine research-intensive institutions now provides a rich national network for research exchange, professional development and advancement into faculty careers.

### Community

The Office of Postdoctoral Affairs works to provide community for postdoctoral scholars. A new recruitment program has successfully expanded the pool of scholars considering postdoctoral training at Stanford, enriching the population. SURPAS, the postdoc association, actively advocates on behalf of the entire population and organizes social activities with subcommittees focused on areas such as family, international scholars, transportation and housing, and career development. Affinity groups include the Stanford Black Postdoc Association, the Stanford LatinX Postdoc Association and LGBTQ+ postdocs. [postdocs.stanford.edu](https://postdocs.stanford.edu)



✧ Knight-Hennessy scholars get to know each other.

## Schools and Programs

### Degrees

Stanford offers the following degrees: BA, BS, BAS, MA, MS, PhD, DMA, MD, MBA, MSM, JD, JSD, JSM, LL.M, MFA, MLS, MLA, MPP, ENG

### Graduate School of Business Dean: Jonathan Levin

Stanford Graduate School of Business (GSB) empowers leaders to change lives, change organizations and change the world. Its faculty, including five Nobel laureates, conducts breakthrough research and engages with students in three degree programs: the two-year full-time MBA, one-year full-time Master of Science for experienced leaders (MSx) and PhD. The Executive Education portfolio includes more than 100 courses, both on campus and online. Stanford Seed is an initiative that partners with entrepreneurs in emerging markets to end the cycle of global poverty. Stanford GSB instills the courage to take risks, the passion to lead and the motivation to make a positive impact. [gsb.stanford.edu](https://gsb.stanford.edu)

### School of Earth, Energy & Environmental Sciences (Stanford Earth) Dean: Stephan Graham; New School Name and Dean: TBD

Stanford is creating its first new school in 70 years as a way of aligning the university's strengths in climate and sustainability research, education and impact. The new school, due to

launch September 1, will join the research and programs from the School of Earth, Energy & Environmental Sciences with the interdisciplinary problem-solving expertise of the Woods Institute for the Environment and Precourt Institute for Energy to create a home for Stanford's university-wide commitment to sustainability. It also includes a Sustainability Accelerator to co-create and scale policy and technology solutions for challenges that threaten people globally. When it launches, the new school will offer BS, MS, MA, Engineer and PhD degrees. [earth.stanford.edu](https://earth.stanford.edu)

### Graduate School of Education Dean: Daniel Schwartz

The Graduate School of Education is the center of teaching and learning at Stanford. With 400 graduate students, the school prepares researchers, policymakers, entrepreneurs, executives and school leaders. The GSE's faculty draw from a variety of disciplines to produce novel scholarship that shapes teaching and learning worldwide. Faculty partner with schools, nonprofits and governments to improve policies and practices and help prepare all learners for a dynamic future. The GSE awards PhD, MA, MS, and MA with teaching credential degrees, as well as joint degrees in public policy, law and business. It also offers an undergraduate minor. The GSE leads the new Stanford Transforming Learning Accelerator to scale effective and equitable learning solutions to all. [ed.stanford.edu](https://ed.stanford.edu)

### School of Engineering Dean: Jennifer Widom

Stanford Engineering has been at the forefront of innovation for nearly a century, laying the technological and business foundations for what we now know as Silicon Valley and creating pivotal technologies that have transformed the worlds of information technology, communications, health care, energy, business and beyond. With nearly 5,000 graduate and undergraduate students and 280 faculty across nine departments and more than 80 laboratories, centers, institutes and programs, the school focuses on seeking solutions to important global problems and educating leaders who will make the world a better place by using the power of engineering principles, techniques and systems. The school aims to educate engineers who possess not only deep technical excellence, but the creativity, cultural awareness and entrepreneurial skills that come from exposure to the liberal arts, business, medicine and other disciplines that are an integral part of the Stanford experience. [engineering.stanford.edu](https://engineering.stanford.edu)

### **School of Humanities and Sciences** Dean: Debra Satz

The School of Humanities and Sciences is Stanford's largest school. As the home of Stanford's world-class liberal arts education, the school encompasses more than 45 departments and interdisciplinary degree programs that span the humanities, arts, languages and literatures, social sciences, mathematics, and the physical and life sciences. H&S enrolls more than 2,300 graduate students and more than 2,000 undergraduate students and has close to 600 faculty members. H&S serves as the foundation of a Stanford undergraduate education no matter which discipline students pursue as a major. The school's graduate programs lead to Doctor of Philosophy, Doctor of Musical Arts, Master of Arts, Master of Science, Master of Public Policy or Master of Fine Arts degrees. [humsci.stanford.edu](https://humsci.stanford.edu)

### **Stanford Law School** Dean: Jenny S. Martinez

Stanford Law School combines classic and innovative legal education, with about 63 faculty members and 180 new JD students annually. The student-to-faculty ratio is 4.4 to 1. The school offers 21 joint degree programs in areas ranging from bioengineering to business to public policy. Eleven clinics allow students to undertake the roles of practicing lawyers, and 25+ academic programs and centers and about 20 policy practicums offer opportunities for research and policy work. [law.stanford.edu](https://law.stanford.edu)

### **School of Medicine** Dean: Lloyd Minor

The School of Medicine, the oldest medical school in the western United States, encourages intellectual diversity in students interested in developing a scholarly, investigative approach to problems in medicine and science and using discoveries to transform patient care. The school has 1,098 faculty, including seven Nobel laureates; 1,470 postdoctoral scholars; 484 MD students; 1,194 PhD and MS candidates; and 1,386 residents and clinical fellows. Faculty deliver care and medical students gain experience at Stanford Hospital and Stanford Health Care, Lucile Packard Children's Hospital Stanford and Stanford Children's Health, Palo Alto Veterans Affairs Medical Center, Santa Clara Valley Medical Center, and other affiliated sites, including the VA Palo Alto Health Care System. The School of Medicine saw \$738 million in sponsored research revenue and \$491 million in NIH funding in 2020. [med.stanford.edu](https://med.stanford.edu)

## **Other Academic Programs**

### **Stanford Digital Education** Vice Provost for Digital Education: Matthew Rascoff

Stanford Digital Education helps to develop Stanford's online and hybrid education strategies and strengthens Stanford's capacity to carry them out. It incubates and supports digital education initiatives across the university that serve the public good. It enables partnerships within and outside Stanford to bring transformative educational opportunities to more people. By uniting Stanford's human and technological capabilities in novel ways, it seeks to build a more just, equitable and accessible system of education. [digitaleducation.stanford.edu](https://digitaleducation.stanford.edu)

### **Stanford Center for Professional Development (SCPD)** Executive Director & Associate Dean: Carissa Little

SCPD has been a pioneer and leader in global, online and extended education since it was established in 1995, helping the School of Engineering deliver the world's first online streaming master's degree in engineering and Stanford's first credentialed professional education programs. SCPD works with Stanford faculty to design and deliver engaging, high-quality online and blended learning experiences to both matriculated students and a global audience of learners.

SCPD operates and manages Stanford Online, Stanford's virtual campus, offering access to credit-bearing courses, certificates and degrees; professional education; group and custom programs; and free educational content. SCPD collaborates with the Stanford Center for Health Education to share health education with the world. SCPD has served over 9.5 million learners, industry collaborators and educators across 240 countries. [scpd.stanford.edu](https://scpd.stanford.edu) | [online.stanford.edu](https://online.stanford.edu)

### **Distinguished Careers Institute Founding Director: Philip Pizzo, MD**

The Stanford Distinguished Careers Institute (DCI) provides a unique opportunity for accomplished individuals in midlife to renew purpose, build community and recalibrate wellness. Over 300 Fellows and alumni, representing a diverse global community, bring a wide range of talents, expertise and connections to Stanford. DCI Fellows contribute to Stanford's centers, Institutes and programs and welcome the opportunity to serve as mentors and project partners on student projects and entrepreneurial ventures.

[dci.stanford.edu](https://dci.stanford.edu) | [dci.stanford.edu/meet-our-fellows](https://dci.stanford.edu/meet-our-fellows)

### **Executive Education Associate Dean: Dave Weinstein**

Stanford Graduate School of Business executive education offers individuals and companies in-person and online programs, along with blended learning that includes both face to face and online components, to enhance leadership skills, build foundations in general management and build connections to a global network of peers.

[gsb.stanford.edu/exec-ed](https://gsb.stanford.edu/exec-ed)

### **Stanford Online High School Head of School: Tomohiro Hoshi**

Stanford Online High School (OHS) is a highly selective independent school with real-time, online seminar-style classes for students in grades 7-12. Founded in 2006, Stanford OHS is the leader in online education, bringing together a global community of diverse, intellectually talented students, expert instructors and supportive staff. Pre-Collegiate Studies, a division of Stanford OHS, offers academic enrichment outreach programs including Pre-Collegiate Summer Institutes, Stanford University Mathematics Camp (SUMaC), Summer Humanities Institute, Stanford Medical Youth Science Program and Math Circle. Each year, the school and its academic outreach programs offer innovative educational opportunities that serve over 3,000 pre-college students from around the world.

[ohs.stanford.edu](https://ohs.stanford.edu) | [spcs.stanford.edu](https://spcs.stanford.edu)



✧ Students in a Stanford Continuing Studies arts class.

### **Stanford Continuing Studies Dean: Daniel Colman; Director and Associate Dean: Jennifer Deitz**

Continuing Studies offers approximately 650 courses per year, attracting more than 17,000 lifelong learners. Courses range from liberal arts and sciences, wellness and health, creative writing, and professional development, offered both on campus and online. Continuing Studies courses are open to adult students everywhere. [continuingstudies.stanford.edu](https://continuingstudies.stanford.edu)

### **Accreditation**

Stanford University is accredited by the Accrediting Commission of Senior Colleges and Universities of the Western Association of Schools and Colleges.



⌘ Class in session with Young Jean Lee, associate professor of theater and performance studies in the School of Humanities and Sciences.

## Stanford Faculty

**Stanford faculty are leaders in their fields** with their accomplishments recognized across the disciplines. Faculty work closely with students and conduct groundbreaking research.

Today, Stanford has 2,288 members of the professoriate faculty. There are 682 members appointed to endowed professorships.

### Stanford's Fall 2021 community of scholars includes:

20  
Nobel laureates

35  
Nobel Prize winners since the university's founding

35  
MacArthur Fellows

6  
National Humanities Medal recipients

4  
Pulitzer Prize winners

10  
National Medal of Science recipients

3  
National Medal of Technology recipients

303  
American Academy of Arts and Sciences members

174  
National Academy of Sciences members

113  
National Academy of Engineering members

90  
National Academy of Medicine members

28  
National Academy of Education members

47  
American Philosophical Society members

6  
Wolf Foundation Prize recipients

1  
Presidential Medal of Freedom recipient

7  
A.M. Turing Award winners while on faculty

3  
Kavli Prize laureates

1  
National Medal of Arts recipient

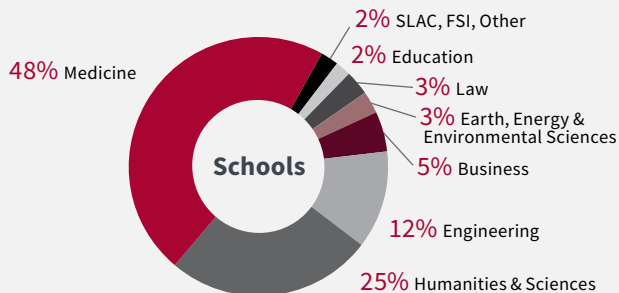
# Faculty Profile Fall 2021

2,288  
Faculty\*

1,692  
Members of  
Academic  
Council

682  
Appointed  
to endowed  
professorships

99%  
Hold the  
highest degree  
in their field



## Tenure/ Appointment

54% Tenured

26% University  
Medical Line

14% Tenure Line,  
Not Tenured

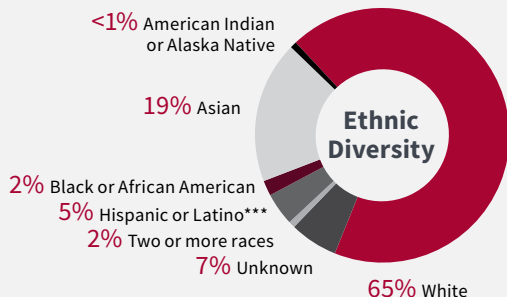
6% Other

## Tenure-line Faculty \*\*

63% Professor

20% Associate  
Professor

18% Assistant  
Professor



## Gender Balance

32%  
Women

68%  
Men

Numbers have been rounded to the nearest whole number.

\* Includes tenure-line and non-tenure-line faculty, senior fellows and center fellows at specified policy centers and institutes, and Medical Center-line faculty.

\*\* Due to rounding, the numbers do not total 100%.

\*\*\* Includes all reporting Hispanic/Latino, regardless of race.



Stanford employees enjoy the sun and camaraderie as they participate in the annual Cardinal Walk.

## Staff

**Stanford staff play a vital role in our mission** to forge a better tomorrow, with contributions that advance the university's ability to create positive change in the world.

Staff lead or support programs and services that enable the university's learning and research priorities to flourish, and that support the highest level of operational effectiveness.

The university supports staff in various aspects of their experience with special benefits, community events and learning resources. [stanfordcareers.stanford.edu](https://stanfordcareers.stanford.edu)

In 2021

15,750\*

staff members supported teaching, learning, research, clinical care and core operations at Stanford.

## This includes:

11,336\*\*  
Managerial and  
professional  
staff

1,703  
Administrative  
and technical  
staff

1,108  
Service and  
maintenance  
staff

1,603  
Staff at  
SLAC National  
Accelerator  
Laboratory

For more information about working at Stanford,  
visit [stanfordcareers.stanford.edu](https://stanfordcareers.stanford.edu)

\* Non-Teaching employees as of 10/31/2021. excludes faculty, graduate students and contingent workforce.

\*\* Includes clinical educator and research staff.



» Students studying genetics in the lab completing research at the Wu Tsai Neurosciences Institute.

## Research and Innovation

**Stanford research is remarkable in both its breadth and depth**, with research programs that reflect the expertise, creativity and initiative of the faculty who set the research agenda. Faculty have a long tradition of engaging with their colleagues and students within Stanford's schools and across disciplines.

### Sponsored Research

There are more than 7,900 externally sponsored projects throughout the university, with the total budget for sponsored projects at \$1.69 billion for 2020-2021, including the SLAC National Accelerator Laboratory (SLAC). Of these projects, the federal government sponsors approximately 79 percent, including SLAC.

### Independent Laboratories, Centers and Institutes

There are 19 independent laboratories, centers and institutes that provide physical and intellectual intersections between schools and disciplines. These institutes are in line with Stanford's long-standing tradition of crossing boundaries to tackle large problems, engaging faculty and their students in collaborations that range from international and economic studies to studies on the environment, energy and health.

[interdisciplinary.stanford.edu](https://interdisciplinary.stanford.edu)

### Science, Technology, Engineering and Math (STEM) Laboratories and Institutes

- » Stanford Bio-X
- » Wu Tsai Neurosciences Institute
- » Stanford Chemistry, Engineering and Medicine for Human Health (ChEM-H)
- » Stanford Institute for Materials and Energy Sciences (SIMES)
- » The Stanford PULSE Institute
- » Kavli Institute for Particle Astrophysics and Cosmology (KIPAC)
- » Geballe Laboratory for Advanced Materials (GLAM)
- » E. L. Ginzton Laboratory
- » The Stanford Center for Clinical and Translational Research and Education (Spectrum)
- » W. W. Hansen Experimental Physics Laboratory (HEPL)

### Policy Institutes

- » Freeman Spogli Institute for International Studies (FSI)
- » Stanford Institute for Economic Policy Research (SIEPR)
- » Human-Centered Artificial Intelligence (HAI)
- » Stanford Woods Institute for the Environment
- » Precourt Institute for Energy

### Humanities and Social Science Centers

- » Stanford Humanities Center (SHC)
- » Stanford Center on Longevity (SCL)
- » Center for Advanced Study in the Behavioral Sciences (CASBS)
- » Center for the Study of Language and Information (CSLI)

## Other Special Research Centers

### SLAC National Accelerator Laboratory

SLAC National Accelerator Laboratory is a U.S. Department of Energy national laboratory operated by Stanford. It shares five joint research centers and 20 joint faculty members with the university. SLAC is home to world-leading facilities for exploring nature's smallest and fastest processes with X-rays and electrons. Research at SLAC spans chemistry, materials and energy sciences, bioscience, fusion energy science, high-energy physics, cosmology, advanced accelerator and technology development, and advanced computer science. [slac.stanford.edu](http://slac.stanford.edu)

### Hoover Institution

Established by Herbert Hoover—a member of Stanford's Pioneer Class of 1895 and the 31st US president—the Hoover Institution marked its centennial in 2019. Former Stanford Provost and US Secretary of State Condoleezza Rice assumed the role of director on September 1, 2020. From its initial charge to collect materials documenting the experience of war and the pursuit of peace, the institution stands today as the world's preeminent archive and policy research center dedicated to freedom, private enterprise and effective, limited government.

### Jasper Ridge Biological Preserve

Jasper Ridge Biological Preserve, located in the foothills of the Santa Cruz Mountains about 15 minutes from the main Stanford campus, encompasses 1,193 acres and provides a natural laboratory for ecosystem research and teaching. Docent-led tours are offered to groups aligned with the preserve's mission to contribute to the understanding of Earth's natural systems through research, education and protection of the preserve's resources. [jrbp.stanford.edu](http://jrbp.stanford.edu) | 650-851-6813

### Hopkins Marine Station

Hopkins Marine Station opened in 1892 as the first marine research facility on the Pacific Coast and the second in the United States. Located on Monterey Bay, Hopkins is home to marine research and study by 10 faculty, one lecturer, two emeritus faculty and one emeritus lecturer. [hopkinsmarinestation.stanford.edu](http://hopkinsmarinestation.stanford.edu)

### Technology Licensing

The Office of Technology Licensing promotes the transfer of Stanford technology for society's use and benefit while generating income to support research and education. In September 2020–August 2021 Stanford received \$118 million in licensing revenue from 1,077 technologies. Seventy-nine of the inventions generated \$100,000 or more in royalties. Twelve inventions generated \$1 million or more. The Office of Technology Licensing (OTL) evaluated 493 new invention disclosures and signed 161 new licenses/options. Forty-three of the licenses were nonexclusive, 78 were exclusive and 40 were option agreements. Sixty-three of the 161 agreements were with Stanford start-ups and 30 of them involved equity. [otl.stanford.edu](http://otl.stanford.edu)

Students, faculty and others headed for Jasper Ridge in the annual Walk the Farm.



Among the inventions licensed by OTL:

- » **Antibody therapies:** In the 1980s, Leonard Herzenberg, Vernon Oi and Sherie Morrison invented a technique for producing functional antibodies, enabling treatments for such conditions as autoimmune diseases and cancer.
- » **Artificial facet joint:** This licensed technology was further developed into the first and only FDA approved, minimally invasive, indirect decompression device to treat lumbar spinal stenosis (LSS).
- » **CoreNLP:** Christopher Manning and his lab developed a set of natural language analysis tools for any application requiring human language technology or natural language processing (NLP) tools necessary to manage human language text.
- » **Data analytics:** Visualization software created in the laboratory of Patrick Hanrahan helps researchers working with large amounts of data to quickly analyze, visualize and share information.
- » **Digital music:** John Chowning developed FM sound synthesis for digitally generating sounds in the late 1960s, leading to the music synthesizer.
- » **DSL:** In the 1980s, John Cioffi and his students discovered how to use traditional phone lines for high-speed data transmission, resulting in patents used in asymmetric digital subscriber lines.
- » **Google:** The world’s most popular search engine got its start as Sergey Brin and Larry Page developed the page-rank algorithm while graduate students.
- » **Recombinant DNA:** This ubiquitous tool for molecular biology was developed in 1973 by Stanley Cohen and Herbert Boyer to enable scientists to perform genetic engineering by combining pieces of DNA from different organisms.
- » **Tuberculosis test:** Gary Schoolnik and his colleagues developed a diagnostic test for tuberculosis that can distinguish between patients who have been vaccinated and those who have the disease.
- » **293T cell line:** Michele Calos and her team developed a human 293T cell line commonly used in the biotech/pharma industry for transfection, recombinant adeno-associated virus (AAV) protein expression, DNA replication or retroviral vector production. The cell line efficiently produces vectors that are utilized for gene and cell therapy.

Innovation

Stanford alumni and faculty have created more than 39,900 companies since the 1930s. Frederick Terman, provost from 1955 to 1965, is called the “academic architect” of the high-technology region known as Silicon Valley.

Stanford graduates have founded, built or led thousands of businesses, including some of the world’s most recognized companies—Google, Nike, Cisco, Hewlett-Packard, Charles Schwab, Yahoo!, Gap, VMware, IDEO, Netflix and Tesla. In the area of social innovation, the Stanford community has created thousands of non-profit organizations over the decades, including such well-known organizations as Kiva, the Special Olympics and Acumen Fund.

Notable Dates in Computing

1953	High-speed electronic calculator installed on campus	1988	Stanford’s network is one of the first to connect to the Internet
1956	First computer installed	1991	SLAC creates the first U.S. website
1957	First faculty member specializing in computers hired	2011	Three Stanford classes are offered openly on the internet and completed by 60,000+ students, jumpstarting the online learning movement
1965	Computer Science Department founded	2013	Stanford engineers build computer using carbon nanotubes
1968	Computer mouse, hypertext linking debuted at Stanford		
1987	First residential computing program established at Stanford		

Visitors to the Cantor Arts Center look at the work titled *Woven Chronicle* by artist Reena Saini Kallat.



## The Arts

**The arts are integral to a Stanford education** and to what Stanford offers the community and the world. The campus is home to two art museums and several smaller galleries, multiple performance venues, as well as departmental programs in art and art history, creative writing, dance, film and media studies, music, and theater and performance. An array of student performance groups and outdoor art make the campus a rich environment for art, artists and audiences. [arts.stanford.edu](https://arts.stanford.edu)

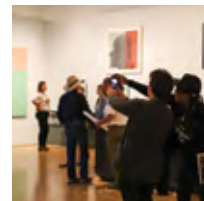
### Anderson Collection at Stanford University

The Anderson Collection opened in 2014 and features modern and contemporary American art representing Abstract Expressionism, Bay Area Figuration, Color Field Painting and more. Artists include Richard Diebenkorn, Helen Frankenthaler, Joan Mitchell and Jackson Pollock. [anderson.stanford.edu](https://anderson.stanford.edu)



### Cantor Arts Center

Founded in 1891, the historic museum was renamed in 1999 for lead donors Iris and B. Gerald Cantor. The encyclopedic collection spans 5,000 years and includes more than 40,000 works of art from around the globe. Its 24 galleries and multiple special exhibitions and programs each year spark interdisciplinary conversations about critical issues. It is one of the most visited university art museums in the country. [museum.stanford.edu](https://museum.stanford.edu)



## Bing Concert Hall, Frost Amphitheater, Roble Gym, Memorial and Dinkelspiel Auditoriums

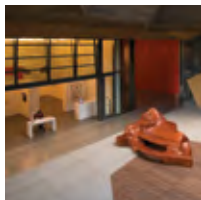
Bing Concert Hall hosts music, dance and theater year-round, anchored by professional performances presented by Stanford Live. Recently renovated Frost Amphitheater, which hosts Stanford Live performances and university events, seats up to 8,000 guests and is one of the largest outdoor venues on campus. Stanford's largest indoor performance space is Memorial Auditorium, which presents the university's largest musicals, dance performances and notable speakers. Roble Gymnasium is home to the Department of Theater and Performance Studies, and includes a dance studio and the Harry J. Elam, Jr. Theater. Dinkelspiel Auditorium serves the Department of Music and the rest of the university for large performances, lectures, symposia and rehearsals.

[live.stanford.edu](https://live.stanford.edu) | [taps.stanford.edu](https://taps.stanford.edu) | [music.stanford.edu](https://music.stanford.edu)



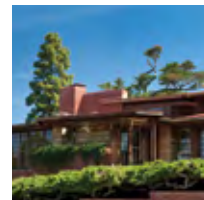
## Coulter Art Gallery, Mohr Student Gallery and Stanford Art Gallery

The Department of Art and Art History manages three public galleries on campus. Coulter Art Gallery and Mohr Student Gallery are located in the McMurtry Building, an interdisciplinary hub and home for the department that fosters interaction and collaboration among students and faculty, and supports the integration of the arts into university life. The department's third exhibition space is the historic Stanford Art Gallery on Lasuen Mall, a gift to the university from Leland Stanford Sr.'s younger brother, Thomas, and the keystone building of the university's second quadrangle in 1917. [art.stanford.edu](https://art.stanford.edu)



## Campus Architecture

Located just beyond stately Palm Drive and the Oval, Stanford's 17-acre Quad is the oldest part of campus and the heart of the university. Its arches and walkways inspired the modern design of the nearby Science and Engineering Quad. Other notable campus buildings include the James H. Clark Center for interdisciplinary research, Stanford Law School's Neukom Building, Hoover Tower, the Bass Biology Building and the recently renovated Sapp Center for Science Teaching and Learning, originally the chemistry building dating to 1903. The architecture of Bing Concert Hall, the Anderson Collection at Stanford University, and the McMurtry Building for the Department of Art and Art History celebrates and supports the arts at Stanford. Stanford's Central Energy Facility has won numerous design and environmental awards since its completion in 2015.

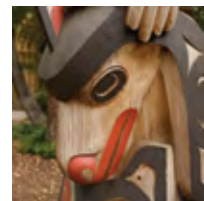


Frank Lloyd Wright's Hanna House was built in 1937. Its unique design is based on hexagonal geometry, with no right angles in the floor plan. Hanna House is typically open twice a year for public tours through the Stanford Historical Society.

[historicalsociety.stanford.edu](https://historicalsociety.stanford.edu)

## Outdoor Art and the Arboretum

From Papua New Guinea sculptures and Alexander Calder's *The Falcon* on the south side of campus to Peter Wegner's site-specific works at the Graduate School of Business to Alicja Kwade's stone sphere installation in the Science and Engineering Quad, there are more than 85 works of outdoor art on the Stanford campus. Also in the arboretum is the Stanford family mausoleum, which holds the remains of Leland and Jane Stanford and their son; the Arizona Garden, which features cacti and succulents planted in the 1880s; and Andy Goldsworthy's *Stone River*, a 320-foot sculpture constructed of sandstone from university buildings destroyed in the 1906 and 1989 earthquakes. [arts.stanford.edu/map](https://arts.stanford.edu/map)





# Libraries and Resources

✦ A student works on research in the stacks of Green Library.

## Libraries and Resources

Stanford Libraries offers students, faculty and scholars various resources and services that support the exploration and investigation of informational resources, as well as the creation and curation of knowledge. With a network of 20 libraries, visitors can engage with primary resources, connect to journals, articles and datasets, partner with subject matter experts for assignments and research and discover various ways to access and connect to digital collections at Stanford and in libraries across the globe.

The Stanford Libraries also host workshops, including introductions to geospatial tools, R, Python and Stata, among many other topics. While visiting the Cecil H. Green Library, make sure to visit the Media and Microtext Center, David Rumsey Map Center and the newly renovated Hohbach Hall, home to the Silicon Valley Archives. Wonder, explore and discover at Stanford Libraries.

[library.stanford.edu](https://library.stanford.edu) | [searchworks.stanford.edu](https://searchworks.stanford.edu) | [@StanfordLibs](https://twitter.com/StanfordLibs)

## Stanford University Press

Founded in 1892, Stanford University Press publishes approximately 140 books a year across the humanities, social sciences, law and business. These books inform scholarly debate, generate global and cross-cultural discussion, and bring award-winning scholarship to the wider reading public. At the leading edge of both print and digital dissemination of innovative research, with more than 3,000 books currently in print, SUP is a publisher of ideas that matter, books that endure. [sup.org](https://sup.org)

## Staying Informed

Stanford Report delivers news and information about research, campus life, events and more for the Stanford community and beyond via email each weekday. [news.stanford.edu](https://news.stanford.edu)

The Stanford Mobile app, available for both iOS and Android, provides access to our campus map, event calendar, campus directory, dining locations, shuttle bus schedules and much more. [uit.stanford.edu/stanford-mobile](https://uit.stanford.edu/stanford-mobile)

Stay connected @Stanford: [f](https://www.facebook.com/Stanford) [i](https://www.instagram.com/Stanford) [y](https://www.youtube.com/Stanford)



- » Students line the streets to show their support during a parade for the 2021 NCAA championship Stanford women's basketball team.

## Student Life

### Housing

As of autumn quarter 2021, 7,312 students live in university-provided undergraduate housing, and 6,543 students live in university-provided graduate housing. Housing is guaranteed for entering undergraduate first-year students for four years. About 97 percent of all eligible undergraduates live in campus housing. The undergraduate housing system includes 80 diverse facilities. The university offers on-campus houses for Greek-letter organizations. About 66 percent of graduate students eligible for housing live in university-provided housing designed for single students, couples and families with children. New graduate students are guaranteed housing their first year at Stanford when they apply by the spring deadline.

### Dining

R&DE Stanford Dining, a division of Residential & Dining Enterprises, is a best-in-class dining program serving 18,000 meals a day in 12 dining halls, 41 Row houses, Athletic Dining and Schwab Executive Dining. Stanford Dining also oversees the campus BeWell community gardens and the Stanford Food Pantry. R&DE Stanford Dining has been recognized for its culinary excellence by awards such as the prestigious industry Ivy Award by Restaurants and Institutions for its leadership role.

R&DE Stanford Dining prides itself on providing nutritious, sustainable and delicious food choices to meet the wide variety of dietary needs within our diverse Stanford community. The Eat Well @Stanford program provides support to students dining with food allergies, religious requirements, medical needs, vegan/vegetarian diets and other nutritional needs. Since the onset of the COVID-19 pandemic, some programs have been temporarily modified and R&DE has implemented enhanced cleaning and safety protocols to continue service while keeping students and staff safe.

R&DE Stanford Dining has a long history of award-winning sustainability leadership. Articles on eating well, sustainability, COVID protocols and meal plan FAQs can be found on the R&DE Stanford Dining website.

[rde.stanford.edu/dining](https://rde.stanford.edu/dining)

### Student Organizations

The Office of Student Engagement oversees more than 600 official student organizations at Stanford. On average, over 1,500 events a year are planned by student organizations. There are about 30 recognized religious organizations, and more than 100 committed to the arts. Other types of organizations include ethnic/cultural, community service, social awareness, social, athletic and recreational, and pre-professional/academic. Approximately 20 percent of undergraduate students will be involved in one of our 20 fraternities and sororities recognized on campus. The main student newspaper is the *Stanford Daily*. The Associated Students of Stanford University (ASSU) is the representative government for both undergraduate and graduate students.

[ose.stanford.edu](https://ose.stanford.edu)

## Haas Center for Public Service

The Haas Center for Public Service educates students to be ethical and engaged global citizens through service, scholarship and community partnerships. The center is a home for service on campus and the hub of Cardinal Service, a university-wide effort to make service an essential feature of a Stanford education. Cardinal Service supports students to enroll in more than 150 community-engaged learning Cardinal Courses; pursue 500 full-time Cardinal Quarter service fellowships and internships offered locally, nationally and globally with Stanford support; build leadership skills through a sustained Cardinal Commitment; and explore public service careers and ways to integrate service into any career.

[haas.stanford.edu](https://haas.stanford.edu)



Fountain hopping in Terman Fountain.



## Traditions

**Big Game**, sometimes referred to as the Battle of the Bay, is the annual football game against the University of California-Berkeley Golden Bears. [125.stanford.edu/give-em-the-axe](https://125.stanford.edu/give-em-the-axe)

**Fountain hopping** involves touring Stanford's main campus fountains and hanging out in them.

**The Wacky Walk** occurs during the first part of Commencement, when undergraduates forgo a more traditional entrance and instead stride into Stanford Stadium, often in costume. [news.stanford.edu/2018/06/08/wacky-walk](https://news.stanford.edu/2018/06/08/wacky-walk)

« Stanford undergraduates at the annual Commencement Wacky Walk into the Stanford Stadium.

# Cardinal Athletics

**Stanford’s success in 2020-21 was impressive,** considering the abbreviated seasons experienced by many of its programs due to the COVID-19 global pandemic and accompanying county restrictions.

The Cardinal extended one of the most recognizable streaks in college athletics, winning at least one NCAA team championship for the 45th straight season, the longest such streak in the country.

The NCAA titles came from women’s basketball, which edged Arizona 54-53 for its first national championship since 1992, and men’s gymnastics, which defended its NCAA crown to win for the seventh time in school history.

Stanford also added a third national championship, with synchronized swimming capturing its ninth title in program history and first since 2016 while hosting the event at Avery Aquatic Center.

Stanford completed a sweep of the Capital One Cup, matching its dual victory achievement from 2017-18 and remaining the only school to claim both the men’s and women’s titles in the same season.

Stanford nearly repeated its 2017-18 success and made it a clean sweep of all three national awards, but finished second in a tight race behind Texas in the final Learfield IMG College Directors’ Cup standings. The Cardinal, which totaled 1195.75 points behind Texas’ 1252, had previously captured the Directors’ Cup for 25 consecutive seasons from 1995 through 2019, following a runner-up finish to North Carolina in 1993-94. [gostanford.com](http://gostanford.com)

## Varsity Sports at Stanford

In the 2021–22 academic year, Stanford has 36 varsity sports—20 for women, 16 for men (sailing is a co-ed sport). In addition to its varsity sports, Stanford Athletics supports campus-wide physical education academic classes, fitness and wellness, aquatics, intramurals, adventure programming and 33 club sports.

## 2021-2022

### Women’s Varsity Sports

Artistic Swimming  
Basketball  
Beach Volleyball  
Cross Country  
Fencing  
Field Hockey  
Golf  
Gymnastics  
Lacrosse  
Lightweight Rowing

Rowing  
Sailing  
Soccer  
Softball  
Squash  
Swimming and Diving  
Tennis  
Track and Field  
Volleyball  
Water Polo

### Men’s Varsity Sports

Baseball  
Basketball  
Cross Country  
Fencing  
Football  
Golf  
Gymnastics  
Rowing  
Sailing

Soccer  
Swimming and Diving  
Tennis  
Track and Field  
Volleyball  
Water Polo  
Wrestling

155	128	52
Total National Team Championships	Total NCAA Team Championships	NCAA Team Championships since 2000

12	296	609
Stanford scholar athletes who have been Rhodes Scholars	Olympic medals won by 177 Stanford-affiliated athletes	Individual national champions

531	45
Individual NCAA champions	Consecutive years with at least one NCAA championship



⌕ The Stanford Quad and campus, with the San Francisco Bay in the background.

**The main Stanford campus is located in seven different governmental jurisdictions:**

4,017 acres in unincorporated Santa Clara County	2,700 acres in unincorporated San Mateo County	1,161 acres in Palo Alto	
114 acres in Woodside	111 acres in Menlo Park	76 acres in Portola Valley	1 acre in Los Altos Hills

8,180 total acres

# Stanford Campus

**Stanford University’s main campus is located on 8,180 acres in the center of the San Francisco Peninsula.**

Stanford land features 49 miles of roads, two separate water systems, three dams, two open water reservoirs for irrigation and three closed potable water reservoirs, 88 miles of water mains, and a post office. Stanford’s Central Energy Facility utilizes heat recovery and thermal storage to maximize efficiency in the university’s heating and cooling systems. Take a virtual tour or a self-guided walking tour by visiting: [visit.stanford.edu/tours/virtual](https://visit.stanford.edu/tours/virtual)

## Redwood City

Stanford’s 35-acre Redwood City campus opened in 2019 and is home to over 2,000 Stanford staff. A center of excellence for critical areas that support the university’s mission of research and education, Stanford Redwood City is located a mile from

downtown and five miles from Stanford’s main campus. Campus facilities include the Cardinal Cafe, Recreation and Wellness Center and Pine Cone Children’s Center. [redwoodcity.stanford.edu](https://redwoodcity.stanford.edu)

## Getting Around

There are over 13,000 bikes on the campus on a normal weekday, and Stanford is the only university awarded three Platinum Bicycle Friendly University designations in a row (2011-2015, 2015-2019 and 2019-2023). Freshmen may not bring cars to campus, but the free Marguerite shuttle includes 58 buses in an 18-route system, including 41 electric buses. In 2020, Stanford offered free transit for eligible affiliates on Caltrain, VTA, AC Transit, Dumbarton express and SamTrans; 100% vanpool subsidies; discounted car sharing with the largest university Zipcar fleet in the United States (34 vehicles at 24 locations); special pricing with the Scoop carpool app; one-on-one commute consultations; a virtual parking permit system; and commute planning. [transportation.stanford.edu](https://transportation.stanford.edu)

# The Stanford Campus features roughly\*



630

buildings that incorporate about 17.9 million square feet



43,000

trees, 25 fountains and over 1,000 different species of plants



140+

retail stores in the 70-acre Stanford Shopping Center



150

companies in the 700-acre Stanford Research Park



1,190

owner-occupied housing units for faculty



1,170

rental units for faculty and staff

## Campus Safety

The Stanford University Department of Public Safety (SUDPS) provides law enforcement, security, safety, crime prevention and emergency services on campus 24 hours a day. Comprising sworn officers, non-sworn officers and support staff, SUDPS personnel endeavor to provide a wide range of high-quality public safety services with an emphasis on service. Sworn officers are reserve Deputy Sheriffs with the Santa Clara County Sheriff's Office and are empowered to enforce the law in the State of California pursuant to Penal Code 836. SUDPS produces the Stanford Safety, Security and Fire Report in compliance with the Jeanne Clery Disclosure of Campus Security Policy and Campus Crime Statistics Act. The 2021 annual report can be found at [police.stanford.edu/pdf/ssfr-2021.pdf](https://police.stanford.edu/pdf/ssfr-2021.pdf). More information about the department and ways to stay safe while living, working and visiting the main Stanford Campus is available at [police.stanford.edu](https://police.stanford.edu) or by calling the SUDPS office at 650-723-9633. The department is located at 233 Bonair Siding.

# Sustainable Stanford

Stanford leads by example in working to reduce its environmental footprint and by engaging the campus community to save resources and contributing to a culture of conservation and innovation. [sustainable.stanford.edu](https://sustainable.stanford.edu)



68%

reduction in campus greenhouse gas emissions, exceeding state and national targets



18%

reduction in campus energy use per square foot since 2000



60+

local farms supply organic, humanely raised, fairly-traded food



45%

reduction in domestic water since 2000



66%

of waste is diverted from landfill using the recycling program



184

electric vehicle charging ports, including Redwood City



861,152\*

Rides taken on the free Marguerite system in 2020



52%

of 2020 commuters used alternatives to driving alone as their primary commute, including 17% who telecommuted\*\*

\* Ridership reduced due to pandemic.

\*\* University commuters include Stanford University employees and commuting students.

Stanford Health Care opened the doors to the new Stanford Hospital in 2019.



# Stanford Medicine

**Stanford Medicine** comprises the Stanford University School of Medicine, Stanford Health Care and Stanford Children's Health.

A leader in the biomedical revolution, Stanford Medicine is ushering in the era of Precision Health. This high-tech, high-touch approach to patient care seeks to not only treat disease but to predict, prevent and cure it—precisely. Stanford Medicine's many transformative advances across research, education and patient care build upon the organization's legacy of innovation. Stanford's contributions in biomedical discovery include the first synthesis of biologically active DNA in a test tube, the discovery of immune response genes, the expansion of optogenetics and the development of one of the first in-house COVID-19 diagnostic tests. Renowned for its patient care, Stanford Medicine is the site of the first successful human heart transplant in the country and the first combined heart-lung transplant in the world. [med.stanford.edu](https://med.stanford.edu)

## Stanford Health Care

Stanford Health Care is a leading academic health system, delivering clinical innovation across its inpatient services, specialty health centers, physician offices, virtual care offerings and health plan programs. As the only Level I trauma center

between San Francisco and San Jose, Stanford Health Care provides compassionate, coordinated care, personalized for the unique needs of every patient. In November 2019, Stanford Health Care's new 824,000-square-foot state-of-the-art hospital opened, bringing its total bed count to 604 and total operating rooms to 70. With more than 2,800 medical staff and more than 1,300 residents and fellows, Stanford Health Care is committed to providing the highest quality care to patients and their families. [stanfordhealthcare.org](https://stanfordhealthcare.org)

## Stanford Children's Health

Stanford Children's Health, with [Lucile Packard Children's Hospital Stanford](https://stanfordchildrens.org) at its center, is the Bay Area's largest health care system exclusively dedicated to children and expectant mothers. Our network of care includes more than 65 locations across Northern California and more than 85 locations in the U.S. Western region. As part of Stanford Medicine, we are cultivating the next generation of medical professionals and are at the forefront of scientific research to improve children's health outcomes around the world. We are a nonprofit organization committed to supporting the community through meaningful outreach programs and services and providing necessary medical care to families, regardless of their ability to pay. [stanfordchildrens.org](https://stanfordchildrens.org)

Students walk on campus in the fall.

# Finances

## In 2021–22, Stanford is a \$7.4 billion enterprise.

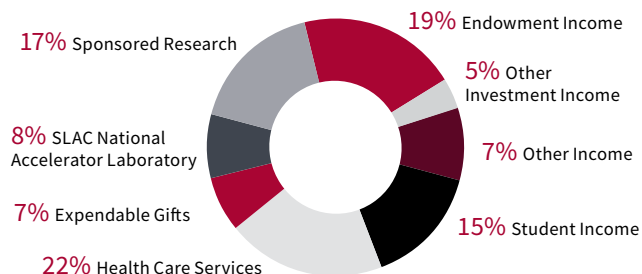
This figure represents the university’s consolidated budget for operations, a compilation of all annual operating and restricted budgets that support teaching, scholarship and research, including the budgets of all schools and administrative areas and the SLAC National Accelerator Laboratory. It does not include the \$0.7 billion capital budget and excludes the budget for Stanford Health Care and Lucile Packard Children’s Hospital.

[businessaffairs.stanford.edu](https://businessaffairs.stanford.edu)

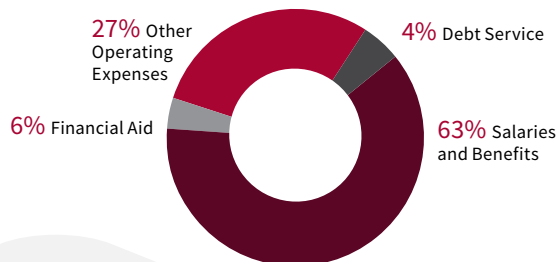
## Endowment

Stanford’s \$37.8 billion endowment (as of Aug. 31, 2021) provides an enduring source of financial support for fulfillment of the university’s mission of teaching, learning and research. It disbursed a \$1.3 billion payout to support vital academic programs and financial aid during the fiscal year. About 75 percent of the endowment is restricted by donors for a specific purpose. There are more than 8,500 endowed university funds. Each year, a portion of investment return from the endowment is used to support annual operating expenses. The remainder of the return is reinvested in the endowment to maintain its purchasing power over time. The Stanford Management Company (SMC) was established in 1991 to manage Stanford’s core investment portfolio. SMC is a division of the university with oversight by a board of directors appointed by the university board of trustees. [smc.stanford.edu](https://smc.stanford.edu)

## Sources for Funds 2021-2022



## Expenditures 2020-2021



## Fundraising

Stanford University, Stanford Health Care and Lucile Packard Children’s Hospital reported \$1.4 billion in gifts and pledge payments during the fiscal year that ended August 31, 2021, reflecting the financial support of more than 56,000 donor households.



✧ President Marc Tessier-Lavigne and Provost Persis Drell at Stanford's first community conversation at Stanford Redwood City campus.

# University Administration

**Stanford University is a trust with corporate powers under the laws of the State of California.**

The university is a tax-exempt entity under section 501(c)3 of the Internal Revenue Code.

Under the provisions of the Founding Grant, the Board of Trustees is custodian of the endowment and all the properties of Stanford University. The board administers the invested funds, sets the annual budget and determines policies for operation and control of the university. Among the powers given to the trustees by the Founding Grant is the power to appoint a president. The board delegates broad authority to the president to operate the university and to the faculty on certain academic matters. The formal legal name is "The Board of Trustees of the Leland Stanford Junior University." [stanford.edu/about/administration](https://stanford.edu/about/administration)

## Board of Trustees (as of December 1, 2021)

**Felix J. Baker,**  
Co-Founder and  
Managing Partner, Baker  
Brothers Investments,  
New York, NY

**Aneel Bhusri,**  
Co-Founder & CEO,  
Workday,  
San Francisco, CA

**DeAngela J.  
Burns- Wallace,**  
Secretary of  
Administration &  
CITO, State of Kansas,  
Topeka, KS

**Michael C. Camuñez,**  
President & CEO,  
Monarch Global  
Strategies LLC, Los  
Angeles, CA

**Michelle R. Clayman,**  
Managing Partner  
& Chief Investment  
Officer, New Amsterdam  
Partners LLC,  
New York, NY

**RoAnn Costin,**  
President, Wilderness  
Point Investments,  
Cambridge, MA

**James G. Coulter,**  
Founding Partner &  
Executive Chairman,  
TPG Capital, LP,  
San Francisco, CA

**Roberta B. Denning,**  
Greenwich, CT

**Katharine B. Duhamel,**  
San Francisco, CA

**José E. Feliciano,**  
Co-Founder & Managing  
Partner, Clearlake  
Capital Group LP, Santa  
Monica, CA

**Henry A. Fernandez,**  
Chairman and CEO,  
MSCI Inc., New York, NY

**Angela S. Filo,**  
Co-Founder, Yellow  
Chair Foundation,  
Palo Alto, CA

**Sakurako D. Fisher,**  
San Francisco, CA

**James D. Halper,**  
Executive Chairman,  
Owl Rock Opportunities  
Fund, Los Angeles, CA

**Marc E. Jones,**  
Chairman & CEO, Aeris,  
San Jose, CA

**Tonia G. Karr,**  
San Francisco, CA

**Sarah H. Ketterer,**  
CEO, Causeway Capital,  
Los Angeles, CA

**Carol C. Lam,**  
Attorney, La Jolla, CA

**Marc S. Lipschultz,**  
Co-Founder and  
President, Owl Rock  
Capital, New York, NY

**Kenneth E. Olivier,**  
Chairman Emeritus,  
Dodge and Cox,  
San Francisco, CA

**Carrie W. Penner,**  
Chair of the Board,  
Walton Family  
Foundation, Aspen, CO

**Laurene Powell Jobs,**  
Founder/President,  
Emerson Collective,  
Palo Alto, CA

**Jeffrey S. Raikes,**  
Co-Founder, The Raikes  
Foundation, Seattle, WA

**Mindy B. Rogers,**  
Atherton, CA

**Lily Sarafan,** CEO,  
Home Care Assistance,  
San Francisco, CA

**Srinija Srinivasan,**  
Palo Alto, CA

**Jeffrey E. Stone,**  
Chairman Emeritus  
and Senior Partner,  
McDermott Will &  
Emery LLP, Chicago IL

**Gene T. Sykes,**  
Global Co-Head of M&A  
& Chairman, Goldman  
Sachs Group, Inc., Los  
Angeles, CA

**Clara Wu Tsai,**  
La Jolla, CA

**Marc Tessier-Lavigne,**  
President, Stanford  
University, Stanford, CA

**Elizabeth H.  
Weatherman,**  
Special Limited Partner,  
Warburg Pincus, LLC,  
New York, NY

**Maurice C. Werdegarr,**  
CEO, WTI,  
Portola Valley, CA

**Jerry Yang,** AME Cloud  
Ventures, Palo Alto, CA

**Charles D. Young,**  
Chief Operating Officer,  
Invitation Homes,  
Dallas, TX



# Stanford Alumni

The Stanford Alumni Association was established in 1892 by the university's first graduating class. There are currently more than 220,000 Stanford alumni.

## University Cabinet\*

**Stacey Bent\*\***,  
Vice Provost for  
Graduate Education &  
Postdoctoral Affairs  
**Sarah Church\*\***,  
Vice Provost for  
Undergraduate Education  
**Persis Drell\*\***, Provost  
**Stephan Graham\*\***,  
Dean, School of Earth,  
Energy & Environmental  
Sciences  
**Chi-Chang Kao\*\***,  
Director, SLAC National  
Accelerator Laboratory  
**Jonathan Levin\*\***,  
Dean, Graduate School  
of Business  
**Jenny Martinez\*\***,  
Dean, School of Law  
**Lloyd Minor\*\***, Dean,  
School of Medicine  
**Kam Moler\*\***, Vice  
Provost and Dean of  
Research  
**Condoleezza Rice\*\***,  
Director, Hoover  
Institution  
**Debra Satz\*\***, Dean,  
School of Humanities  
& Sciences  
**Dan Schwartz\*\***, Dean,  
Graduate School of  
Education  
**Marc Tessier-Lavigne\*\***,  
President  
**Jennifer Widom\*\***, Dean,  
School of Engineering  
**Ryan Adesnik**,  
Vice President for  
Government Affairs

**Susie Brubaker-Cole**,  
Vice Provost for Student  
Affairs  
**Jon Denney**, Vice  
President for  
Development  
**Patrick Dunkley**, Vice  
Provost for Institutional  
Equity, Access &  
Community  
**Shirley Everett**, Senior  
Associate Vice Provost  
for Residential and  
Dining Enterprises  
**Steve Gallagher**, Chief  
Information Officer  
**Marty Higgins**, Associate  
Secretary of the Board of  
Trustees  
**Stephanie Kalfayan**, Vice  
Provost for Academic  
Affairs  
**Michael Keller**,  
University Librarian and  
Director of Academic  
Information Resources  
**Farnaz Khadem**,  
Vice President for  
Communications  
**Randy Livingston**, Vice  
President for Business  
Affairs and Chief  
Financial Officer  
**Bernard Muir**, Director of  
Athletics  
**Megan Pierson**, Chief of  
Staff to the President;  
Secretary of the Board of  
Trustees  
**Matthew Rascoff**,  
Vice Provost for Digital  
Education

**Robert Reidy**, Vice  
President for Land,  
Buildings and Real Estate  
**Raina Rose Tagle**, Senior  
Associate Vice President  
and Chief Risk Officer  
**Richard Shaw**,  
Dean of Undergraduate  
Admission and  
Financial Aid  
**Martin Shell**, Vice  
President and Chief  
External Relations Officer  
**Matt Snipp**, Vice Provost  
for Faculty Diversity and  
Engagement  
**Tiffany Steinwert**,  
Dean for Religious and  
Spiritual Life  
**Matthew Tiews**,  
Assoc. Vice President,  
Campus Engagement;  
Sr. Assoc. Vice President  
for the Arts  
**Robert Wallace**,  
CEO, Stanford  
Management Company  
**Timothy Warner**, Vice  
Provost for Budget &  
Auxiliaries Management  
**Howard Wolf**, Vice  
President for Alumni  
Affairs and President,  
Stanford Alumni  
Association  
**Elizabeth Zacharias**,  
Vice President for Human  
Resources  
**Debra Zumwalt**, Vice  
President and General  
Counsel  
**Ruth O'Hara\*\*\***,  
Chair, Faculty Senate

## Academic Leaders

**Joseph Castro**,  
California State  
University chancellor  
**Sean Decatur**, Kenyon  
College president  
**Michael Drake**,  
University of California  
president  
**Jonathan Holloway**,  
Rutgers University  
president  
**Kristina Johnson**,  
Ohio State University  
president  
**Hilary Link**, Allegheny  
College president  
**Vincent E. Price**, Duke  
University president  
**Jason Wingard**, Temple  
University president

## News Media

**Gretchen Carlson**,  
producer/host  
**Dave Flemming**,  
broadcaster  
**Rodney Gilmore**,  
broadcaster  
**Josh Haner**,  
photojournalist  
**Ted Koppel**,  
broadcaster  
**Rachel Maddow**,  
broadcaster

## Arts and Entertainment

**Andre Braugher**, actor  
**Sterling K. Brown**, actor  
**Cheo Coker**,  
producer/writer  
**Jennifer Connelly**,  
actress  
**Ted Danson**, actor  
**Issa Rae Diop**, actress  
**Richard Diebenkorn\***,  
artist  
**Christy Haubegger**,  
producer  
**Gale Anne Hurd**,  
producer  
**David Lang**, composer  
**Robert Motherwell\***,  
artist  
**Jon Nakamatsu**, pianist  
**Alexander Payne**,  
director  
**Edward Pressman**,  
producer  
**Sigourney Weaver**,  
actress  
**Reese Witherspoon**,  
actress  
**Richard Zanuck\***,  
producer  
**Daniel Lee (Tablo)**, artist  
**Jack Palance\***, actor

## Athletics Baseball

**Jason Castro**  
**Jed Lowrie**  
**Mike Mussina**  
**Stephen Piscotty**

## Football

**John Elway**  
**Zach Ertz**  
**Andrew Luck**  
**John Lynch**  
**Christian McCaffrey**  
**Jim Plunkett**  
**Richard Sherman**

## Basketball

**Jarron Collins**  
**Brook Lopez**  
**Robin Lopez**  
**Chiney Ogumike**  
**Nneka Ogumike**

## Golf

**Notah Begay III**  
**Tom Watson**  
**Michelle Wie**  
**Tiger Woods**  
**Mickey Wright**

## Tennis

**Bob Bryan**  
**Mike Bryan**  
**Nicole Gibbs**  
**John McEnroe**

## Soccer

**Corey Baird**  
**Tierna Davidson**  
**Julie Foudy**  
**Catarina Macario**  
**Jordan Morris**  
**Kelley O'Hara**  
**Christen Press**  
**Andi Sullivan**

\* As of December 31, 2021  
\*\* Executive Cabinet  
\*\*\* Invited Officer as of November 22, 2021.

\* Deceased

## Softball

Jessica Mendoza

## Olympians

Tony Azevedo

Jennifer Azzi

Maya DiRado

Julie Foudy

Katie Ledecky

Simone Manuel

Bob Mathias\*

Pablo Morales

Summer Sanders

Erik Shoji

Kerri Strug

Jenny Thompson

Brenda Villa

Kerri Walsh Jennings

## Business

Brian Acton,

WhatsApp co-founder

Mary Barra,

General Motors

Andy Bechtolsheim,

Sun Microsystems

Sergey Brin,

Google

Carlos Brito,

Anheuser-Busch InBev

José e. Feliciano,

Clearlake Capital Group

Doris Fisher, Gap

Xavier A. Gutierrez,

Arizona Coyotes

Hockey Club

Reed Hastings, Netflix

William Hewlett\*,

Hewlett-Packard

Reid Hoffman, LinkedIn

Jensen Huang, NVIDIA

Phil Knight, Nike

Mike Krieger, Instagram

Katrina Lake, Stitch Fix

Marissa Mayer,

Lumi Labs

Charlotte Pera,

ClimateWorks  
Foundation

Miriam Rivera,

Ulu Ventures

Charles R. Schwab,

Charles Schwab Corp.

Debbie Sterling,

GoldieBlox

Kevin Systrom,

Instagram

Jerry Yang, Yahoo

## Writing & Poetry

Brit Bennett

Michael Cunningham

Jeffrey Eugenides

Dana Gioia

Yaa Gyasi

Robert Hass

David Henry Hwang

Ken Kesey\*

N. Scott Momaday

Robert Pinsky

John Steinbeck\*

Tobias Wolff

## Government

Kyriakos Mitsotakis,

Prime Minister, Greece

Rishi Sunak, Chancellor

of the Exchequer, Great  
Britain

## Presidents

Herbert Hoover\*, U.S.

president

Supreme Court Justices

Stephen Breyer

Anthony Kennedy

Sandra Day O'Connor

William Rehnquist\*

## Nobel Prize

### Winners

Eric Cornell, physics

Dudley Herschbach,

chemistry

Roger Kornberg,

chemistry

Paul Milgrom,

economics

Al Roth, economics

K. Barry Sharpless,

chemistry

Richard E. Taylor,

physics

Carl Wieman, physics

Oliver E. Williamson,

economics

## Inventors

Vinton Cerf, Internet

protocol

John Chowning,

synthesizer

Ray Dolby\*,

noise- reduction system

Ted Hoff,

microprocessor

Ted Maiman\*, laser

Brad Parkinson, GPS

Brent Townshend,

56K modem

## And More

Stewart Brand,

Internet pioneer

France Anne-Dominic

Córdova, National

Science Foundation  
director

Atul Gawande, surgeon

Jessica Jackley, Kiva

Robert Mondavi\*,

vintner

Ellen Ochoa, astronaut

Jeff Raikes, The Raikes

Foundation

Sally Ride\*, first U.S.

woman in space

Blake Ross, Mozilla

Firefox developer

Premal Shah,

Kiva founder

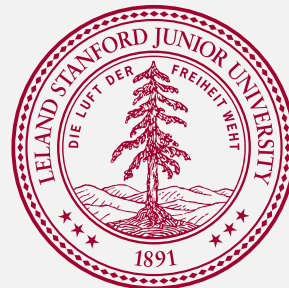
Eunice Kennedy

Shriver\*, Special

Olympics founder

Jeffrey Skoll,

Skoll Foundation



## University Motto and Seal

“Die Luft der Freiheit weht” is Stanford’s unofficial motto and translates as “the wind of freedom blows.” The phrase is a quote from Ulrich von Hutten, a 16th-century humanist. Stanford’s first president, David Starr Jordan, embraced von Hutten’s words and included them on his presidential seal. The motto is part of the university seal.

The indicia featured in this book are protected trademarks of Stanford University.

Stanford Facts is produced by the Office of University Communications.

[facts.stanford.edu](https://facts.stanford.edu)

**Art Direction:** Dana Granoski

**Contributing Editors:** Pam Moreland, Nicole Scandlyn

**Copy Editor:** Heidi Beck

**Design:** Mattie Wells

**Editor:** Pam O’Sullivan

**Photography:** Andrew Brodhead, Stanford News Service; Erin Chang, Stanford Athletics; Linda A. Cicero, Stanford News Service; Tim Griffith, Ennead Architects; Holly Hernandez, Stanford News Service; Lyndsay Radnedge; Mike Rusay; Greg Shorin; Harrison Truong; Steve Fisch Photography; Stanford University Archives; Bob Wilmot.

**Back Cover:** The Stanford Tree mascot and the incomparable Stanford Junior University Marching Band join Commencement festivities.



Stanford